

**LEGEND**

	REFERENCE LINE
	GRANITE STATE GAS R.O.W.
	ROADWAY OR PATH
	TRAIL
	CONTOUR (20' INTERVAL)
	STREAM/RIVER
	POWERLINE
	PROPERTY LINE
	TREE LINE
	WETLAND
	WATER
	CULVERT
	HOUSE/BUILDING



6.4.0372



6.4.0389



6.4.0393



6.4.0398



6.4.0401



6.4.0400



6.4.0410

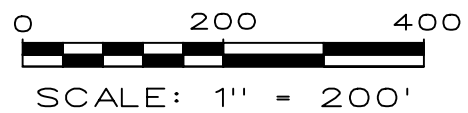
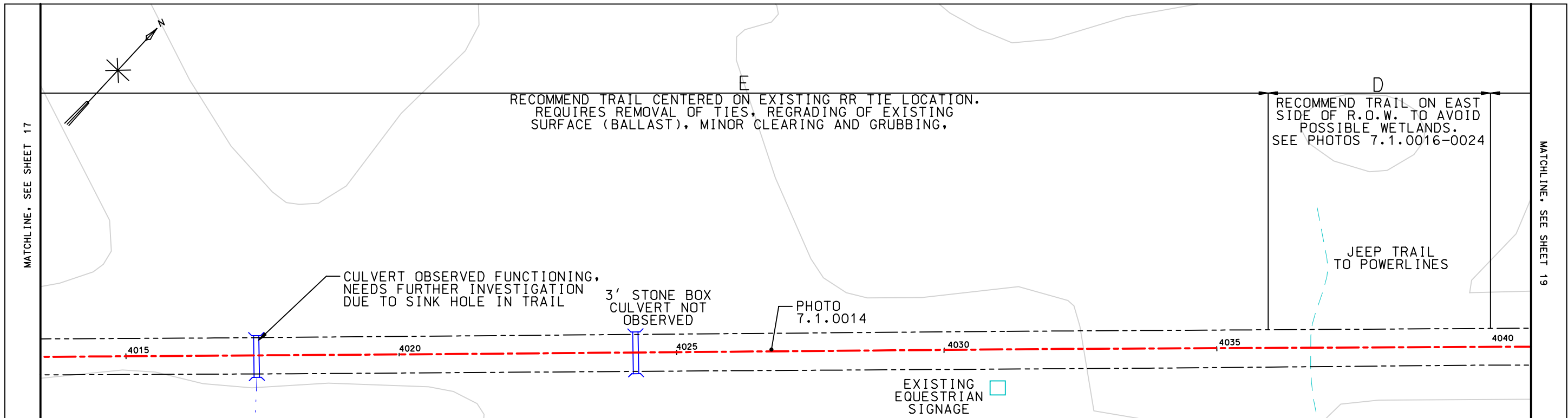


7.1.0004

NOTE: A,B,C,D,E, & F ARE CROSS SECTION NOTATIONS. SEE REPORT FOR CLARIFICATION.

BASE MAP SOURCE: GRANITE STATE GAS TRANSMISSION

SEGMENTS 6 AND 7  
NORTH BERWICK  
AND WELLS, ME



LEGEND	
	REFERENCE LINE
	GRANITE STATE GAS R.O.W.
	ROADWAY OR PATH
	TRAIL
	CONTOUR (20' INTERVAL)
	STREAM/RIVER
	POWERLINE
	PROPERTY LINE
	TREE LINE
	WETLAND
	WATER
	CULVERT
	HOUSE/BUILDING



7.1.0014



7.1.0017



7.1.0018



7.1.0019



7.1.0020



7.1.0021



7.1.0022



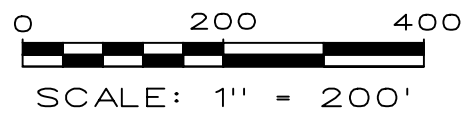
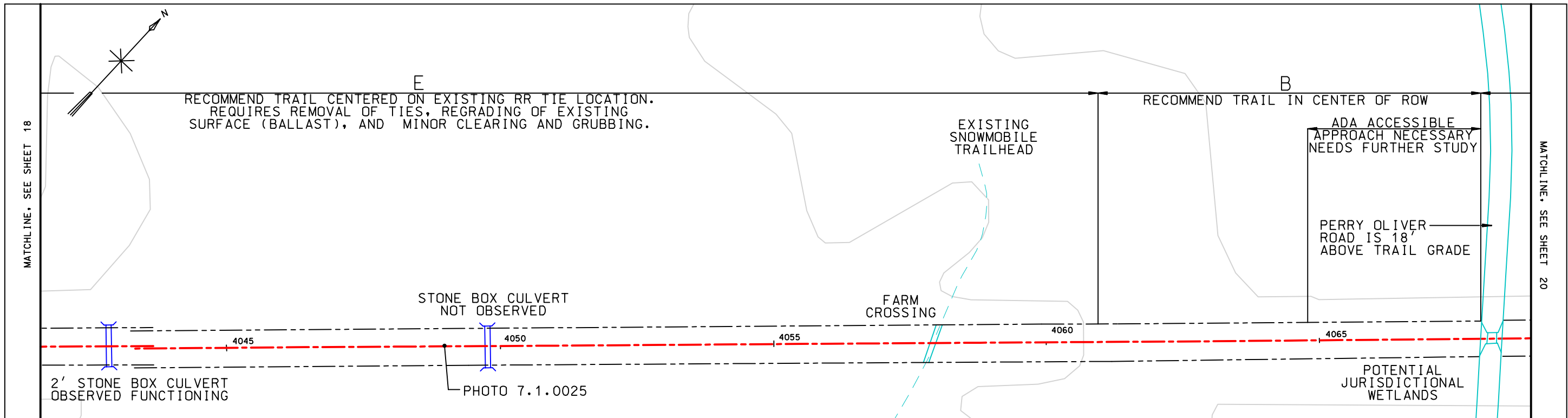
7.1.0024

NOTE: A,B,C,D,E, & F ARE CROSS SECTION NOTATIONS. SEE REPORT FOR CLARIFICATION.

BASE MAP SOURCE: GRANITE STATE GAS TRANSMISSION

SEGMENT 7  
WELLS, ME





LEGEND	
	REFERENCE LINE
	GRANITE STATE GAS R.O.W.
	ROADWAY OR PATH
	TRAIL
	CONTOUR (20' INTERVAL)
	STREAM/RIVER
	POWERLINE
	PROPERTY LINE
	TREE LINE
	WETLAND
	WATER
	CULVERT
	HOUSE/BUILDING



7.1.0025

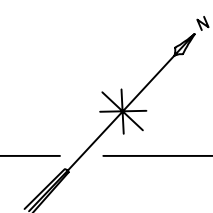
NOTE: A,B,C,D,E, & F ARE CROSS SECTION NOTATIONS. SEE REPORT FOR CLARIFICATION.

BASE MAP SOURCE: GRANITE STATE GAS TRANSMISSION

SEGMENT 7  
WELLS, ME

MATCHLINE - SEE SHEET 19

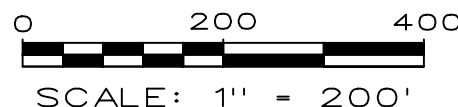
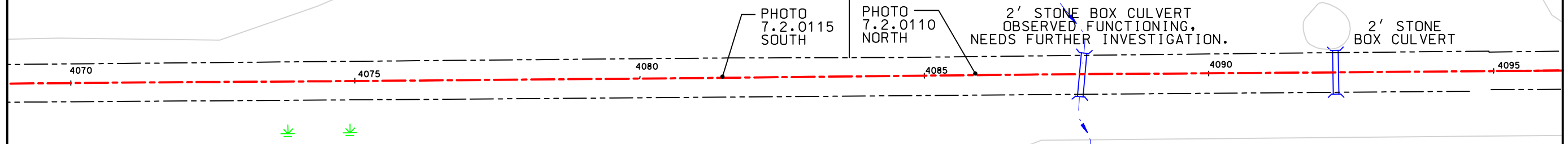
MATCHLINE - SEE SHEET 21



B  
RECOMMEND TRAIL TO FOLLOW EXISTING ACCESS  
TRAIL TO AVOID POTENTIAL WETLAND IMPACTS

E  
RECOMMEND REMOVAL OF EXISTING RR TIES,  
REGRADING, AND MINOR CLEARING AND GRUBBING.  
THIS SECTION MAY REQUIRE GUARD RAILS.

NOTE: PHOTOS BETWEEN PERRY  
OLIVER ROAD (POR) AND BALD HILL  
CROSSING (BHC) WERE TAKEN STARTING  
FROM BHC AND LOOKING SOUTH TO POR.



**LEGEND**

- REFERENCE LINE
- GRANITE STATE GAS R.O.W.
- ROADWAY OR PATH
- TRAIL
- CONTOUR (20' INTERVAL)
- STREAM/RIVER
- POWERLINE
- PROPERTY LINE
- TREE LINE
- + WETLAND
- WATER
- || CULVERT
- HOUSE/BUILDING



7.2.0115



7.2.0110

NOTE: A,B,C,D,E, & F ARE  
CROSS SECTION NOTATIONS.  
SEE REPORT FOR CLARIFICATION.

BASE MAP SOURCE: GRANITE STATE GAS TRANSMISSION

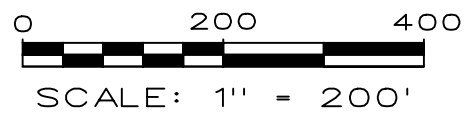
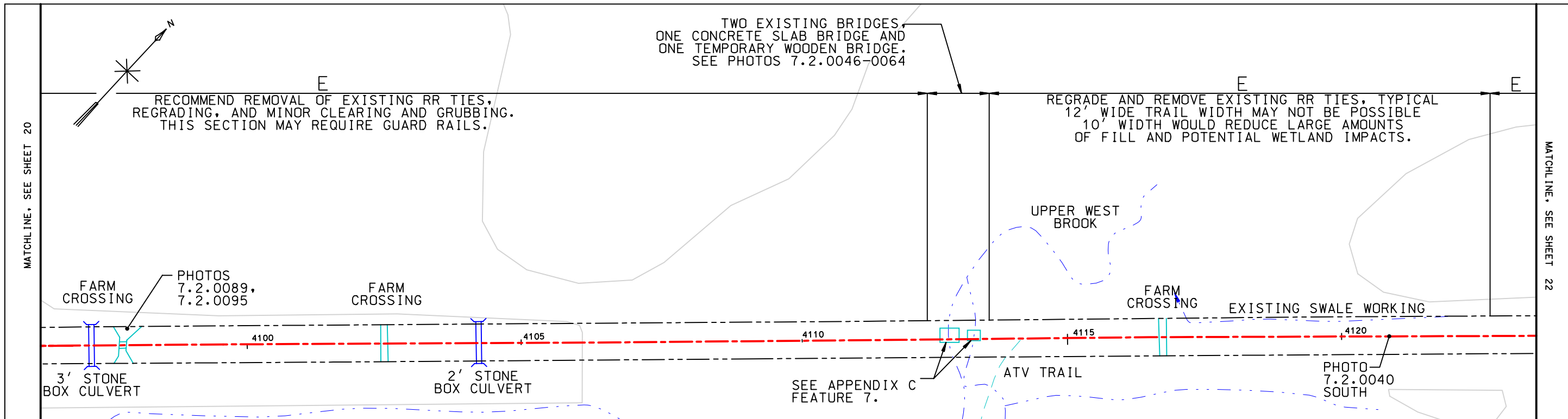
SEGMENT 7  
WELLS, ME

WILBUR SMITH ASSOCIATES  
TERRENCE J. DEWAN AND ASSOCIATES

EASTERN TRAIL CONCEPT PLAN

FEBRUARY, 2001  
REVISIONS:

SHEET 20 OF 76



**LEGEND**

	REFERENCE LINE
	GRANITE STATE GAS R.O.W.
	ROADWAY OR PATH
	TRAIL
	CONTOUR (20' INTERVAL)
	STREAM/RIVER
	POWERLINE
	PROPERTY LINE
	TREE LINE
	WETLAND
	WATER
	CULVERT
	HOUSE/BUILDING



7.2.0089



7.2.0095



7.2.0046



7.2.0050



7.2.0054



7.2.0058



7.2.0060



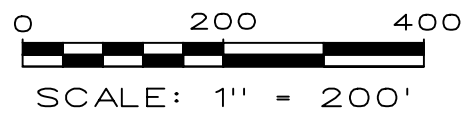
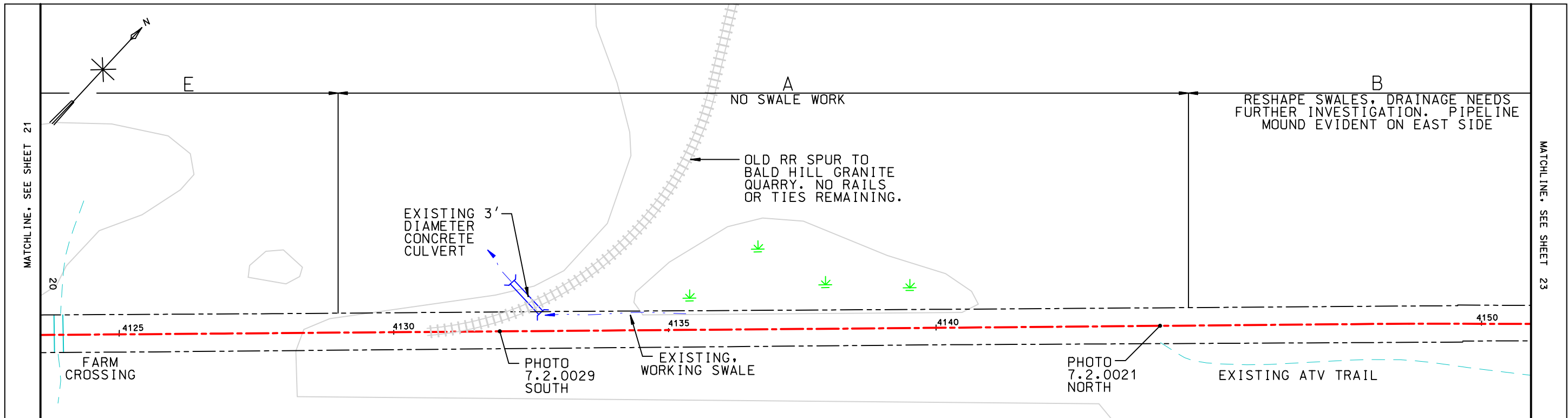
7.2.0040

NOTE: A,B,C,D,E, & F ARE CROSS SECTION NOTATIONS. SEE REPORT FOR CLARIFICATION.

BASE MAP SOURCE: GRANITE STATE GAS TRANSMISSION

SEGMENT 7  
WELLS, ME





**LEGEND**

	REFERENCE LINE
	GRANITE STATE GAS R.O.W.
	ROADWAY OR PATH
	TRAIL
	CONTOUR (20' INTERVAL)
	STREAM/RIVER
	POWERLINE
	PROPERTY LINE
	TREE LINE
	WETLAND
	WATER
	CULVERT
	HOUSE/BUILDING



7.2.0029

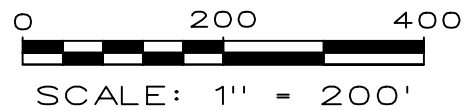
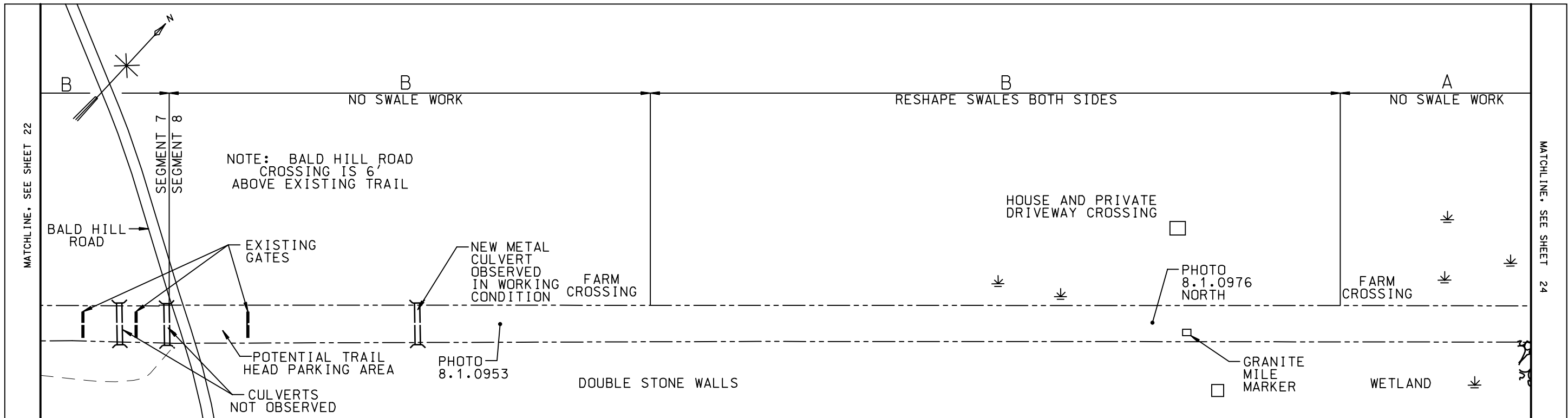


7.2.0021

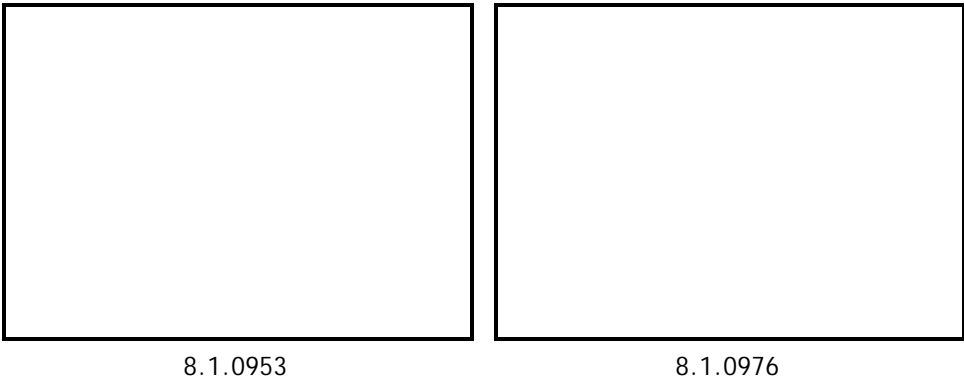
NOTE: A,B,C,D,E, & F ARE CROSS SECTION NOTATIONS. SEE REPORT FOR CLARIFICATION.

BASE MAP SOURCE: GRANITE STATE GAS TRANSMISSION

SEGMENT 7  
WELLS, ME



LEGEND	
—	REFERENCE LINE
----	GRANITE STATE GAS R.O.W.
—	ROADWAY OR PATH
- - -	TRAIL
—	CONTOUR (20' INTERVAL)
- - - -	STREAM/RIVER
.....	POWERLINE
- - - -	PROPERTY LINE
~~~~~	TREE LINE
⊥	WETLAND
⊙	WATER
⌈	CULVERT
□	HOUSE/BUILDING



NOTE: A,B,C,D,E, & F ARE CROSS SECTION NOTATIONS. SEE REPORT FOR CLARIFICATION.

BASE MAP SOURCE: GRANITE STATE GAS TRANSMISSION

SEGMENTS 7 AND 8  
WELLS, ME