

**LEGEND**

- REFERENCE LINE
- GRANITE STATE GAS R.O.W.
- ROADWAY OR PATH
- TRAIL
- CONTOUR (20' INTERVAL)
- STREAM/RIVER
- POWERLINE
- PROPERTY LINE
- TREE LINE
- + WETLAND
- WATER
- CULVERT
- HOUSE/BUILDING



14-16.2.1043



14-16.2.1046



14-16.2.1049



14-15.2.1067



14-16.2.1087

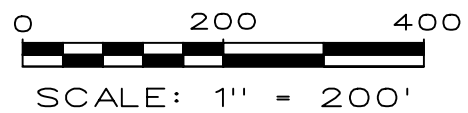
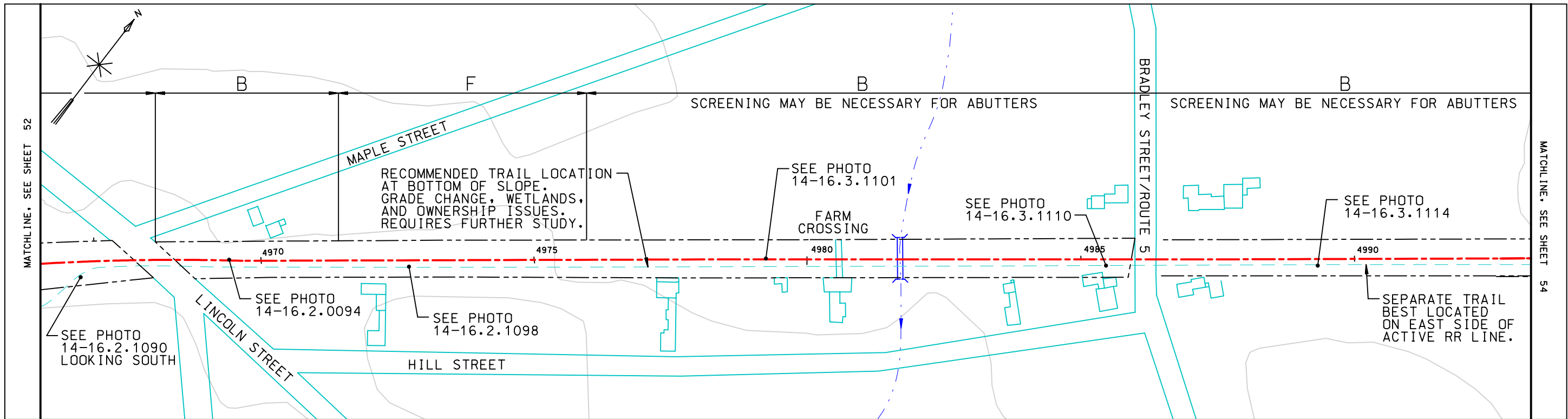


14-16.2.1081

NOTE: A,B,C,D,E, & F ARE CROSS SECTION NOTATIONS. SEE REPORT FOR CLARIFICATION.

BASE MAP SOURCE: GRANITE STATE GAS TRANSMISSION

SEGMENTS 15 AND 16  
BIDDEFORD AND SACO, ME



**LEGEND**

- REFERENCE LINE
- GRANITE STATE GAS R.O.W.
- ROADWAY OR PATH
- TRAIL
- CONTOUR (20' INTERVAL)
- STREAM/RIVER
- POWERLINE
- PROPERTY LINE
- TREE LINE
- + WETLAND
- WATER
- CULVERT
- HOUSE/BUILDING



14-16.2.1090



14-16.2.1094



14-16.2.1098



14-16.3.1101



14-16.3.1110

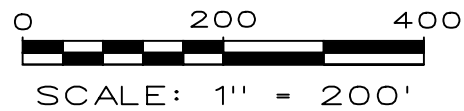
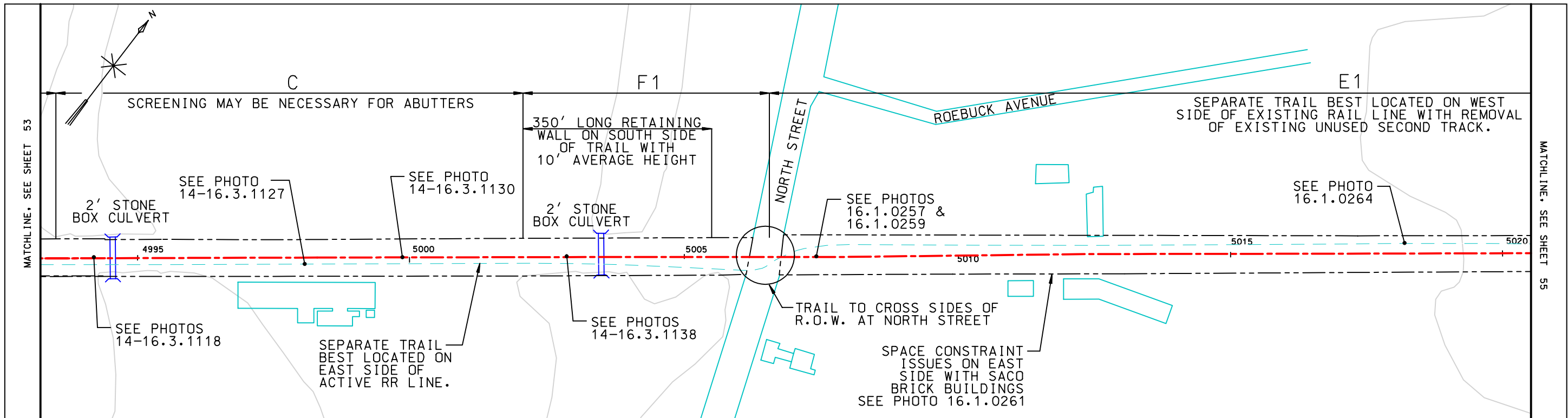


14-16.3.1114

NOTE: A,B,C,D,E, & F ARE CROSS SECTION NOTATIONS. SEE REPORT FOR CLARIFICATION.

BASE MAP SOURCE: GRANITE STATE GAS TRANSMISSION

SEGMENT 16  
SACO, ME



LEGEND	
	REFERENCE LINE
	GRANITE STATE GAS R.O.W.
	ROADWAY OR PATH
	TRAIL
	CONTOUR (20' INTERVAL)
	STREAM/RIVER
	POWERLINE
	PROPERTY LINE
	TREE LINE
	WETLAND
	WATER
	CULVERT
	HOUSE/BUILDING



14-16.3.1118



14-16.3.1127



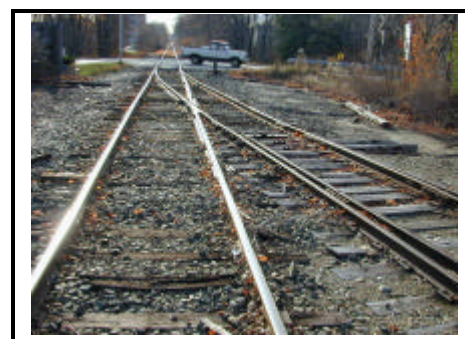
14-16.3.1130



14-16.3.1138



16.1.0257



16.1.0259



16.1.0261



16.1.0264

NOTE: A,B,C,D,E, & F ARE CROSS SECTION NOTATIONS. SEE REPORT FOR CLARIFICATION.

BASE MAP SOURCE: GRANITE STATE GAS TRANSMISSION

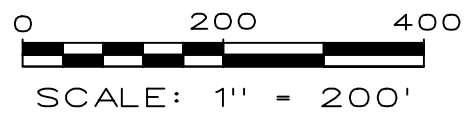
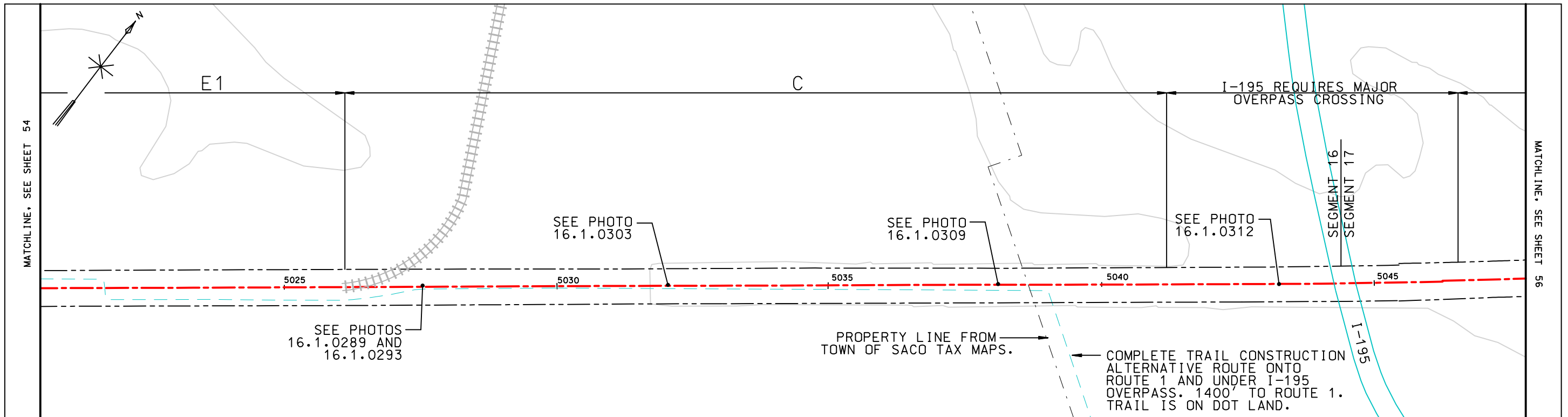
SEGMENT 16  
SACO, ME

WILBUR SMITH ASSOCIATES  
TERRENCE J. DEWAN AND ASSOCIATES

EASTERN TRAIL CONCEPT PLAN

FEBRUARY, 2001  
REVISIONS:

SHEET 54 OF 76



**LEGEND**

	REFERENCE LINE
	GRANITE STATE GAS R.O.D.W.
	ROADWAY OR PATH
	TRAIL
	CONTOUR (20' INTERVAL)
	STREAM/RIVER
	POWERLINE
	PROPERTY LINE
	TREE LINE
	WETLAND
	WATER
	CULVERT
	HOUSE/BUILDING

NOTE: A,B,C,D,E, & F ARE CROSS SECTION NOTATIONS. SEE REPORT FOR CLARIFICATION.

BASE MAP SOURCE: GRANITE STATE GAS TRANSMISSION

Long Term Recommendations: Solid Lines  
 Alternatives/Options: Dashed Lines



Recommendations: Saco/I-195 Area



16.1.0289



16.1.0303



16.1.0309



16.1.0312

SEGMENTS 16 AND 17  
 SACO, ME