

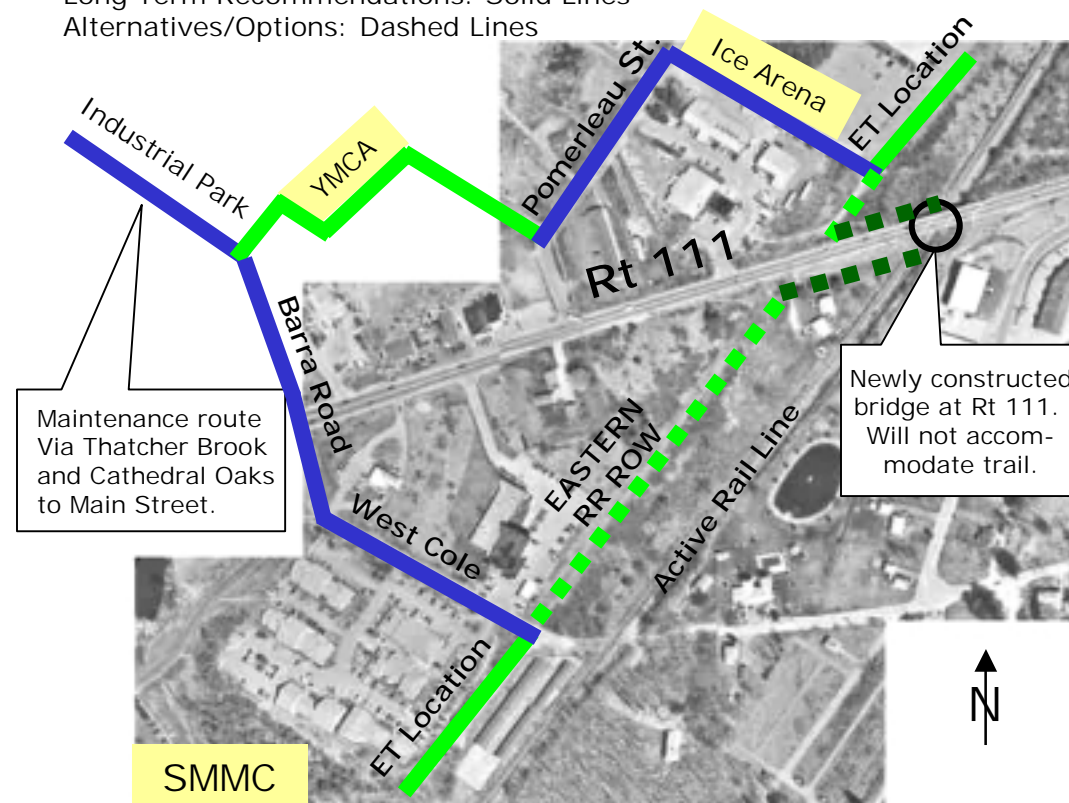
**LEGEND**

- REFERENCE LINE
- GRANITE STATE GAS R.O.W.
- ROADWAY OR PATH
- TRAIL
- CONTOUR (20' INTERVAL)
- STREAM/RIVER
- POWERLINE
- PROPERTY LINE
- TREE LINE
- WETLAND
- WATER
- CULVERT
- HOUSE/BUILDING

NOTE: A,B,C,D,E, & F ARE CROSS SECTION NOTATIONS. SEE REPORT FOR CLARIFICATION.

BASE MAP SOURCE: GRANITE STATE GAS TRANSMISSION

Long Term Recommendations: Solid Lines  
 Alternatives/Options: Dashed Lines



14-16.1.0948



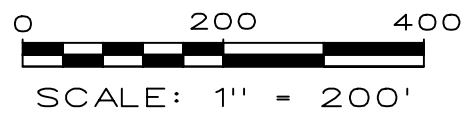
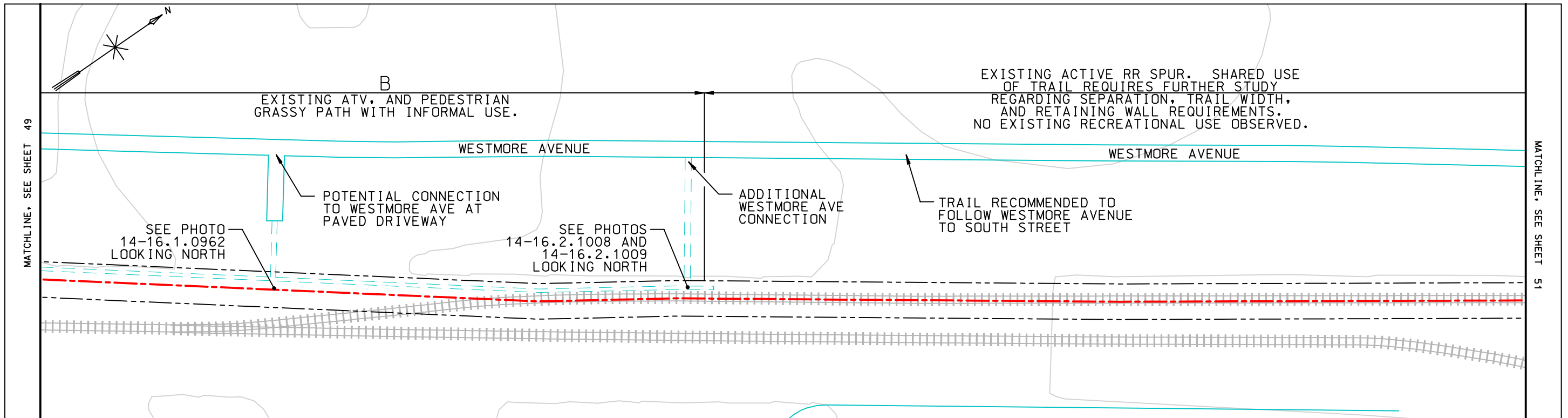
14-16.1.0949



14-16.1.0961

Recommended Rt. 111 Alternative: West Cole to Barra Road to YMCA to Pomerleau Street to Ice Arena

SEGMENTS 14 AND 15  
 BIDDEFORD, ME



LEGEND	
	REFERENCE LINE
	GRANITE STATE GAS R.O.W.
	ROADWAY OR PATH
	TRAIL
	CONTOUR (20' INTERVAL)
	STREAM/RIVER
	POWERLINE
	PROPERTY LINE
	TREE LINE
	WETLAND
	WATER
	CULVERT
	HOUSE/BUILDING

NOTE: A,B,C,D,E, & F ARE CROSS SECTION NOTATIONS. SEE REPORT FOR CLARIFICATION.

BASE MAP SOURCE: GRANITE STATE GAS TRANSMISSION



14-16.1.0962

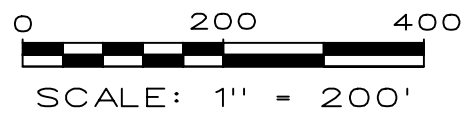
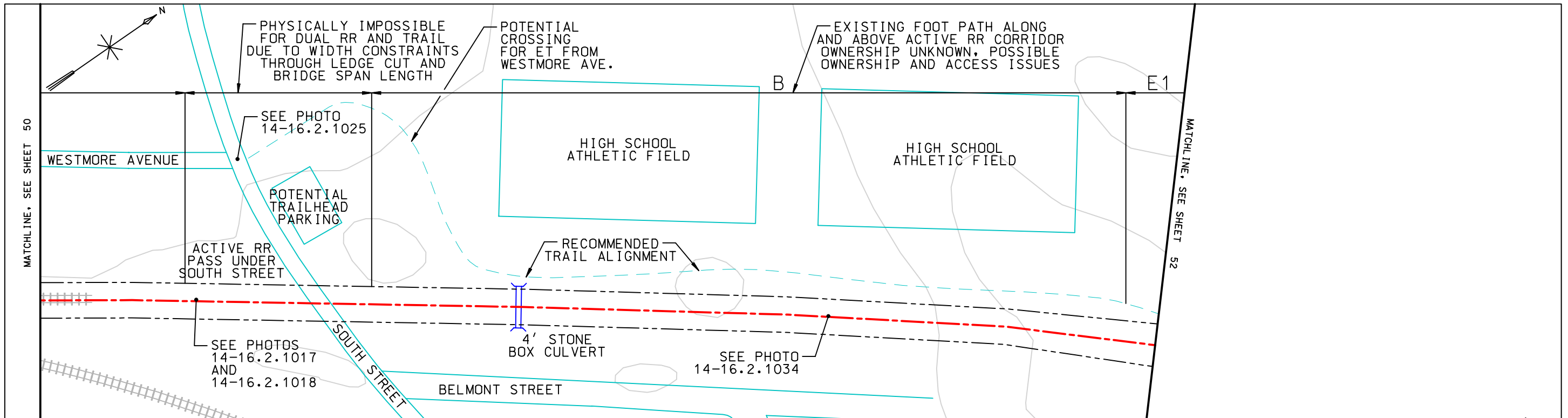


14-16.2.1008



14-16.2.1009

SEGMENT 15  
BIDDEFORD, ME



**LEGEND**

- REFERENCE LINE
- GRANITE STATE GAS R.O.W.
- ROADWAY OR PATH
- TRAIL
- CONTOUR (20' INTERVAL)
- STREAM/RIVER
- POWERLINE
- PROPERTY LINE
- TREE LINE
- + WETLAND
- WATER
- || CULVERT
- HOUSE/BUILDING



14-16.2.1017



14-16.2.1018



14-16.2.1025

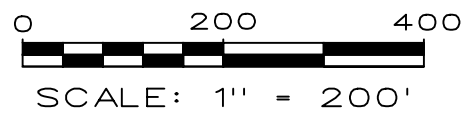
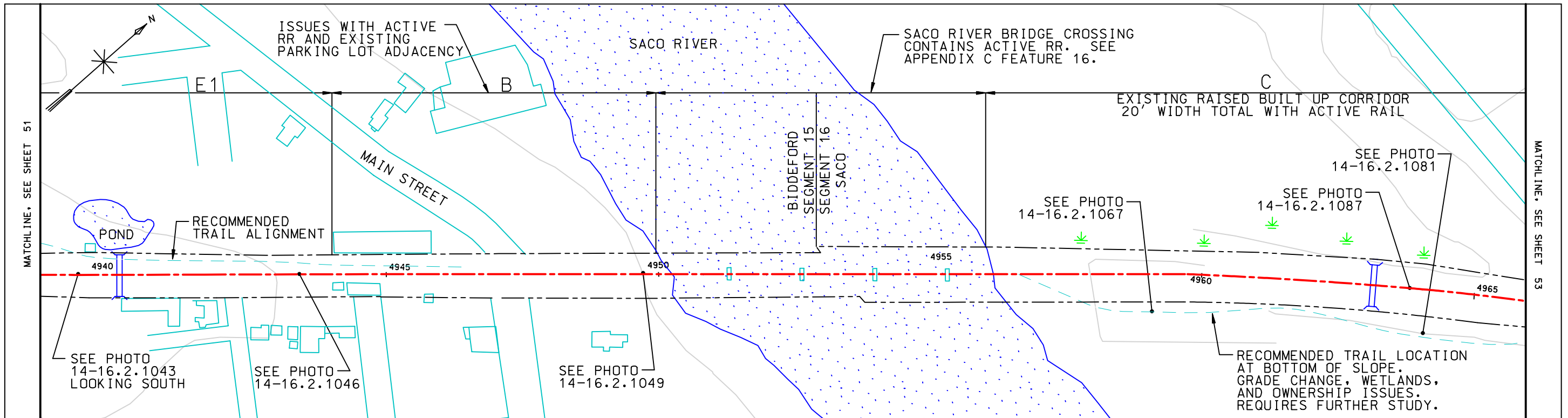


14-16.2.1034

NOTE: A,B,C,D,E, & F ARE CROSS SECTION NOTATIONS. SEE REPORT FOR CLARIFICATION.

BASE MAP SOURCE: GRANITE STATE GAS TRANSMISSION

SEGMENT 15  
BIDDEFORD, ME



**LEGEND**

	REFERENCE LINE
	GRANITE STATE GAS R.O.W.
	ROADWAY OR PATH
	TRAIL
	CONTOUR (20' INTERVAL)
	STREAM/RIVER
	POWERLINE
	PROPERTY LINE
	TREE LINE
	WETLAND
	WATER
	CULVERT
	HOUSE/BUILDING



14-16.2.1043



14-16.2.1046



14-16.2.1049



14-15.2.1067



14-16.2.1087



14-16.2.1081

NOTE: A,B,C,D,E, & F ARE CROSS SECTION NOTATIONS. SEE REPORT FOR CLARIFICATION.

BASE MAP SOURCE: GRANITE STATE GAS TRANSMISSION

SEGMENTS 15 AND 16  
BIDDEFORD AND SACO, ME

WILBUR SMITH ASSOCIATES  
TERRENCE J. DEWAN AND ASSOCIATES

EASTERN TRAIL CONCEPT PLAN

FEBRUARY, 2001  
REVISIONS:

SHEET 52 OF 76